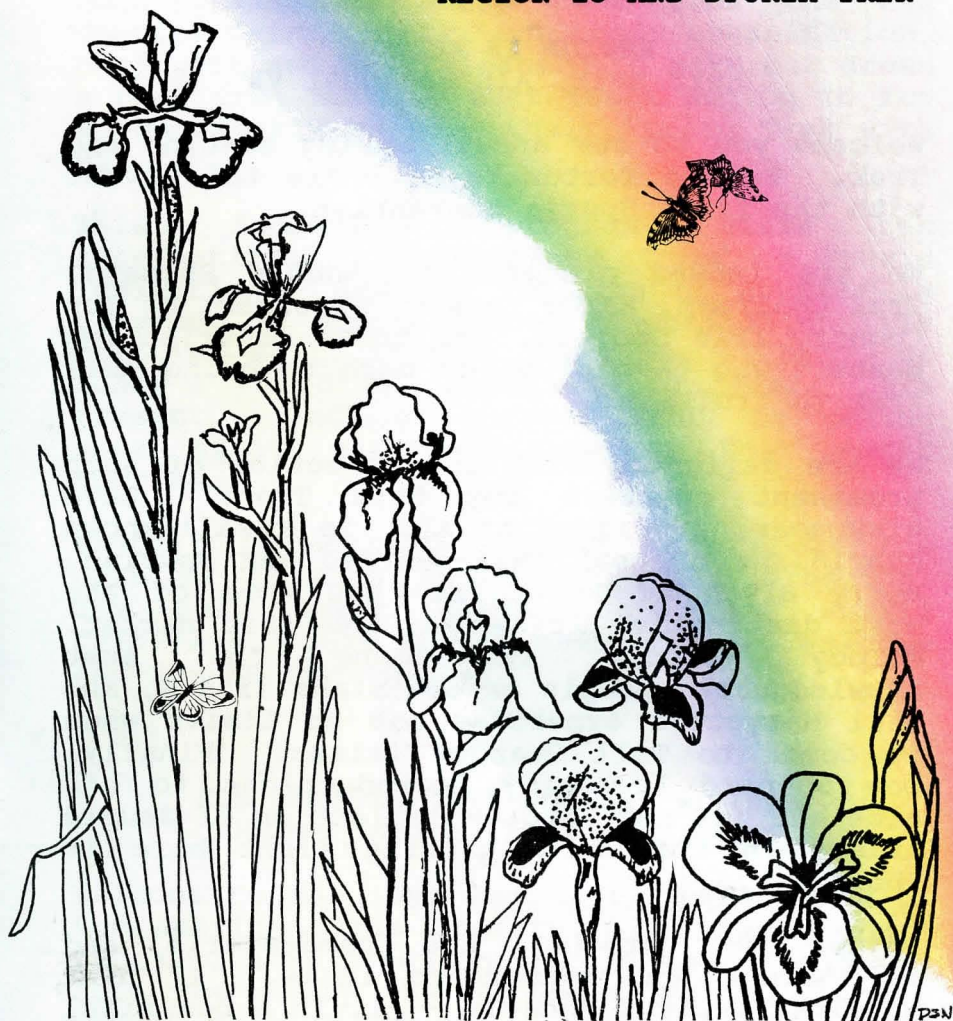


**RAINBOWS IN THE DESERT  
1998 AMERICAN IRIS SOCIETY  
REGION 15 AND SPURIA TREK**



**April 17 - 19, 1998  
Phoenix, Arizona**

**Sponsored by:**

**American Iris Society Region 15  
AIS Spuria Society  
and  
Sun Country Iris Society**



### **REGION 15 WELCOME**

Herb Holk, AIS Regional VP

Welcome you to our annual Spring meeting and Trek. We are fortunate to share this event with the first Spuria convention.

We are indeed grateful to Bobbie Shepard, Trek Chairman, Marge Larson, President of Sun Country Iris Society, and those contributing members who have given so much to bring this trek to fruition.

We are delighted with the selection of such prominent speakers for this Trek: Dave Niswonger, president of AIS, is a well-known hybridizer of both Tall-Bearded and Spurias. Barry Blyth of Australia, has some of the most distinctive irises on the iris market. Melody Wilhoit is among the most knowledgeable people on Louisiana irises, and Bill Maryott's expertise has no limits when it comes to Tall Bearded irises. Finally, Don Shepard has many introductions to his name and has the largest collection of Spuria irises in the world growing right here in Phoenix.

Enjoy the gardens, the camaraderie and fellowship, and exchanging ideas. If time permits, explore Phoenix -- it is a beautiful city!

### **SPURIA WELCOME**

Tom Abrego, President, Spuria Society

Welcome! Thank you for attending the Spuria Iris Society's first ever Mini-convention. Such a meeting has been our dream for years.

We owe such enormous thanks to chairman Bobbie Shepard, assistant chair Ellen Joy Smith, and the merry band from the Sun Country Iris Society, for their organization, hard work and determination to make our dream a reality. We also must thank Region 15 for so generously sharing their Spring Trek with us.

This incredible program stars an international assemblage of Spuria luminaries. Judge's Training on Spurias is offered. A special panel discussion on iris culture will include spurias. Many of today's leading Spuria hybridizers are present. And, of course, we'll be seeing some great gardens featuring the newest Spurias.

Enjoy this weekend. Learn more about the care of Spurias and about their breeding. See some great gardens and new Spuria cultivars. Make new friends. Again, welcome and thanks for coming!

### **SUN COUNTRY IRIS SOCIETY WELCOME**

Marge Larson, SCIS President

Welcome to the 1998 Region 15/Spuria Trek of the American Iris Society. Our members are proud to have grown so many types of iris and hope you enjoy the varied displays. There should be a "Rainbow" of colors as you visit the gardens and examine the exhibits.

Our thanks to the many members who planned and contributed to this Trek - it took a lot of time, energy, and participation. We hope this work will provide you with an enjoyable experience. Please celebrate spring with us during this special weekend.



## AGENDA

**FRIDAY, APRIL 17, 1998**

3:00 - 5:00pm Region 15 Board Meeting.

3:00 - 5:00pm Spuria Society Board Meeting.

Dinner On your own

7:00 - 9:00pm Judges' Training: Melody Wilhoit on Louisianas. Ms. Wilhoit has been involved in AIS for over 20 years. She grows iris commercially and is active in the AIS Louisiana Iris Society.

**SATURDAY, APRIL 18, 1998**

7:00 am SHARP! Buses load for gardens

Lunch Box lunch served at gardens as part of tour

1:00 - 2:00pm Region 15 Business Meeting

2:15 - 3:15pm Spuria Iris Society Business Meeting

3:30 - 5:30pm Judges' Training: Dave Niswonger on Spurias. Mr. Niswonger is the current AIS President. He has hybridized iris for over 30 years including tall bearded, medians and spurias.

Dinner On your own

## AGENDA (continued)

7:00 - 9:00pm Culture Forum. No this isn't the finer points of etiquette! We're talking about the care and keeping of iris. The panelists are Barry Blyth, Bill Maryott, Don Shepard, and Melody Wilhoit. Mr. Blyth is a fourth generation iris grower; he joins us from Melbourne, Australia. Mr. Maryott has hybridized for over 20 years. Don Shepard and wife Bobbie operate Shepard Iris Garden, our "lunch spot" on tour today. Finally Melody Wilhoit, also an experienced iris grower, brings her knowledge to the panel.

**SUNDAY, APRIL 19, 1998**

7:00 am SHARP! Buses load for gardens

1:00 - 3:30 pm Awards Banquet with Barry Blyth, Guest Speaker. We will present awards for introductions and seedlings, popular vote for spuria, answers to the Mystery Irises, overall favorites and winners of the popular vote for cut iris on display at the hotel will be announced.

3:30 - 6:00 pm Bonus gardens open for tour; transportation on your own.





## BARRY BLYTH INTRODUCTION

Mr. Blyth joins us from Melbourne, Australia. He is a fourth generation iris grower and has many hybridizing credits to his name. His interests range widely within the iris kingdom.

Australia's seasons are reversed from ours. Melbourne's climate is moderate, about 24 inches of rain annually especially during the winter (June to August). One-half mile from the coast, freezes are rare but do occur on occasion. Summer heat can go to 100F.

Mr. Blyth says "[Spuria irises] are favored by Australians who live out in the country and on outback cattle and sheep stations. This is because it is so harsh and hot, and once they are established, they require little or no care. In spring one can come across clumps of *ochroleuca* and *monnieri* where once 50 to 80 years ago a house once stood." Mr. Blyth's hybridizing objectives for spuria iris are for new colors, patterns, width, and better form.

An avid tall bearded hybridizer, he is still in pursuit of a "good pink amoena" after 35 years of effort. Bicolor patterns with quality of substance and form like those seen in the best blues and white are his focus. He reports happily that this is "just starting to happen consistently in the seedling rows." In addition, he raises from 500 to 2000 dwarf and median seedlings each year trying to improve and concentrate the tangerine factor (eg. CHANTED (SDB)).

Mr. Blyth won the 1996 AIS Hybridizer's Medal. See his biography in July 1997 Bulletin of the American Iris Society.

## SPURIA TIDBITS FROM TOM ABREGO

We are in the heart of "Spuria Country" at what we hope is peak Spuria bloom. Because of their late bloom season, Spurias are seldom seen at AIS Treks.

Exceptions include the 1956 convention in Los Angeles, which visited a number of very well known gardens featuring Spurias. 1956 was also the year the first Nies Award was given, to WADI ZEM ZEM (Milliken 1943). The AIS visited Phoenix in 1987, with SON OF SUN (Wickenkamp 1983) winning the President's Cup and then the Nies Award.

Region 15 has been the center of Post War Spuria breeding. Region 15 Spuria hybridizers include Nies, Milliken, Corliss, Craig, Combs, Walker, Ferguson, McCown, Johnsen, Wickenkamp and Jenkins. The latter three are Arizona residents. The Wickenkamp garden is a feature garden Saturday morning; the Jenkins garden is a bonus garden Sunday afternoon.

Although Spurias will grow and bloom well in most areas of the country, they really thrive in the arid Southwest. Most modern hybrids are descendants of species found from southern Europe, east through Afghanistan. Modern hybrids are respected for their ease of growth and enormous size. Their exquisite flowers are highly sought by both florists and arrangers.

Founded in 1952, the Spuria Iris Society maintains a test garden, sponsors scientific research, links a network of display gardens, and publishes and updates the Spuria Checklist. We publish a newsletter, offer a slide rental program, and meet annually. Now, we celebrate the first mini-convention!



## **TREK ORIENTATION**

### **Trek Headquarters**

Wyndham Metrocenter Hotel  
10220 N. Metro Parkway East  
Phoenix, Arizona 85051  
602-997-5900

### **Tickets**

Your name badge holder also contains tickets for other Trek events: Saturday bus tour, Saturday box lunch, Sunday bus tour, Sunday Awards Banquet, and one Raffle Ticket. Be sure to check your tickets when you register.

### **Bonus Garden Tours**

Sign in at guest register at each garden. Prizes will be awarded for attendance. Transportation is on your own. Welcome packets include a metropolitan Phoenix map courtesy of Budget Rent-A-Car. Driving directions in this booklet are provided from major mile cross streets and approximate distances from Wyndham.

### **Driving in Metropolitan Phoenix**

Metropolitan Phoenix is comprised of more than a dozen cities and towns. The largest land area belongs to the City of Phoenix. The majority of streets are laid out in a grid system. In general, streets that run east-west are named. The north-south streets in Phoenix are numbered with the exception of Central Avenue which is the middle or zero mark. Streets and Places are on the east side of Central. Major mile roads on the east side are usually even-numbered (16, 24, 32, 44, 56, 68, 72, etc.). Avenues and Drives are on the west side of Central. Major mile roads on the west side are usually odd-numbered (15, 23, 35, 103, etc.). There

is a 7th Street and a 7th Avenue which are major mile streets, so take note of more than just the number!

### **Raffle Tickets**

Tickets for raffle items are available during registration hours and may also be purchased at the boutique during boutique hours. You do not need to be present to win, but you must pick up your winnings before you leave. Items will be shipped at your request if paid by you in advance.

### **Boutique**

Boutique hours are generally Trek program hours except for garden tour times. We have a number of local crafters and hobbyists as well as some out-of-town talent. Cash and personal checks are accepted.

### **Culture Forum**

No this is not the finer points of etiquette! Confirmation of your registration included a survey to help our panel get to know the audience a little better and to solicit questions and topics for discussion at Saturday night's program. If you brought a completed survey or questions with you, please submit them to the registration desk.





**Betty Howard**  
**11240 North 37th Street**  
**Phoenix, AZ 85028**  
**602-996-9004**

The semi-formal gardens of Betty Howard and her husband, Charles, demonstrate the simple but powerful effect iris can have en masse. In a sea of pink and purple petunias hemmed by white rock and backed by climbing Cecille Bruenner roses, a rainbow unfolds along poolside.

Betty's collection numbers 127 iris, primarily tall bearded. Her spuria collection lines the back wall. Betty has been growing iris in Phoenix for only eight years (she still has the original order form!) although her love of iris and roses stems from her mother's appreciation of these beauties.

Don't miss the special planting of space age iris at the far end of the pool (these are two year clumps). Iris located in a bed west of the bird bath are three-year-old clumps.

Guest iris are all located in the back yard. Near the patio, a special grouping of Pete DeSantis' guest iris surround EDITH'S COLORS (a Charles Jenkins' bitone spuria). Follow the path at the corner of the house to see the rest of the guest iris located among the citrus trees.

While you are here, continue to follow the path and enjoy the display of roses. Don't miss the "friendship" rose garden in the front yard shared with the neighbors next door.

Watering is done via a bubbler system which feeds the iris beds. Summer temperatures require watering nearly every other day.

#### **GARDEN VOTING NOTES**

R15 Intro (yellow) \_\_\_\_\_

R15 Seedling (green) \_\_\_\_\_

Out of Region (rainbow) \_\_\_\_\_

Best Registered Spuria \_\_\_\_\_

Mystery TB \_\_\_\_\_

Mystery Spuria \_\_\_\_\_

Favorites: \_\_\_\_\_

Favorites: \_\_\_\_\_

## Howard Garden

TYPE	NAME	HYBRIDIZER	YR	COLOR
SPU	*96001-9309	Shepard		
SPU	*AY 86F	Jenkins		
SPU	*COLOR SORCERY	Jenkins	96	PurpleBrown
SPU	*ELFIN SUNSHINE	Jenkins	98	Yellow
SPU	SULTAN'S SASH	Niswonger	90	Brown

TB	6005	Richards		
TB	*84-35	DeSantis		White
TB	*85-3	DeSantis		White
TB	*85-5	DeSantis		White
TB	*90-06	DeSantis		CreamGold
TB	BARELY THERE	Burseen	94	LemonViolet
TB	CHEROKEE NATION	Hedgecock	92	Red Bitone
TB	CLOSE SHAVE	Meek	95	IvoryPink
TB	ELIZABETH ANN THOMAS	Mullin	95	Violet
TB	*GRAPE CHAMPAGNE	Shepard	97	PurpleWhite
TB	HORNS & BLUES	Hedgecock	96	Blue
TB	JOY JUNCTION	Burseen	93	TanPurple
TB	KOOL KNIGHT	M. Dunn	98	
TB	NIGHT SQUALL	Pinegar	95	Wine
TB	PETTICOATS & LACE	Hedgecock	95	Pink
TB	*SCOONCHEE	DeSantis	97	Plum
TB	TANZANIAN TANGERINE	B. Kasperek	95	Tangerine
TB	UNICORN WONDER	Hedgecock	93	YellowWhite
TB	ZANDRIA	Nebeker	96	PinkPurple



**Ardi Kary**  
**6201 E. Calle Rosa**  
**Scottsdale, AZ 85251**  
**602-949-0253**  
**Fax: 602-945-8599**  
**Email: ArdiKary@aol.com**

Kary Iris Garden is one of two commercial iris gardens in the metro Phoenix area. Ardi has over 1,000 iris and specializes in arilbreds which extend the bloom season. This half acre property seems larger because it has gardens within the garden, each with its own ambiance. Don't forget your catalog!

Ardi's love of iris comes from her father who began hybridizing in the 1940's as a hobby while he worked as a postal clerk. His favorites, HEART STEALER and PINK BETTERMENT, still grow in Ardi's garden. In the early '80s, Ardi and husband Ray began moving her ailing father's collection from Salt Lake City to their home in Scottsdale. Although he never lived to see the garden in person, his grandchildren and their children continue



to work this garden in the family iris tradition.

Guest iris are interspersed with other iris. The front yard can be divided by the sidewalk for orientation purposes. East of the mailbox are arilbred iris. West of the mailbox and to the driveway are tall bearded. On the east lot line are calla lilies and a succulent garden. You'll admire the 100 mini roses that ring the front. Along the drive is a xeriscaped garden including cacti, mesquite and jojoba.

Walking through the garden gate you will pass under a canopy of grape and Jeanne LaJoie rose to the next large planting of iris. It is predominantly tall bearded iris with a few medians and arilbred. Ringing this area are the spurias and Louisiana irises.

Pass the white dove aviary and pause in the rose garden. Continue past the pool area to see the four connecting ponds. Water lilies and hyacinths, *pseudacorus*, horsetail and ferns grow in the deep shade. Goldfish, koi, mosquito fish, and guppies donated by the neighborhood children inhabit this water garden. The iris gardens are watered with soaker hoses; other areas are on drip irrigation or sprinkler.

#### GARDEN VOTING NOTES

R15 Intro (yellow) \_\_\_\_\_

R15 Seedling (green) \_\_\_\_\_

Out of Region (rainbow) \_\_\_\_\_

Best Registered Spuria \_\_\_\_\_

Mystery TB \_\_\_\_\_

Mystery Spuria \_\_\_\_\_

Favorites: \_\_\_\_\_

Favorites: \_\_\_\_\_

TYPE	NAME	HYBRIDIZER	YR	COLOR
SPU	*96004-9309	Shepard		
SPU	*BF53D	Jenkins		
SPU	*BH 44A	Jenkins		
SPU	*ELFIN SUNSHINE	Jenkins	98	Yellow
SPU	*SUN SPLASH	Jenkins	97	WhiteYellow
TB	6005	Richards		
LA	*83-5A	DeSantis		Purple
TB	*83-11B	DeSantis		Burgundy
TB	84-25-2	Hedgecock		Yellow
TB	*84-35	DeSantis		White
TB	84-6-R	Hedgecock		Orange
TB	84-99-1	Hedgecock		Maroon
TB	*85-5	DeSantis		White
TB	*85-12	DeSantis		White
LA	*86-08	DeSantis		BlueGray
TB	*90-06	DeSantis		CreamGold
BB	ALLISON ELIZABETH	Pinegar	96	Orchid
TB	ALPINE SONG	Hedgecock	93	White
TB	B1082-Z	B. Dunn		White
BB	BABOON BOTTOM	B. Kasperek	94	Pink
TB	BEAT THE HEAT	Burseen	96	VioletBlue
TB	CHARMED	M. Dunn	94	Cream
TB	CHEROKEE NATION	Hedgecock	92	Red Bitone
TB	COURNEY NICOLE	Hedgecock	96	Peach
TB	ELAINEALOPE	B. Kasperek	95	Lavender
TB	ELIZABETH ANN THOMAS	Mullin	95	Violet
TB	FALLEN ANGEL	Meek	95	Lavender
TB	FASHION PASSION	Burseen	96	VioletBlue
TB	FUNNY VALENTINE	Pinegar	96	Pink
TB	GIRAFFE KNEEHIZ	B. Kasperek	96	Apricot
TB	GLORY BE	Hamblen/Meek	95	Tan
TB	GNU	B. Kasperek	94	Lavender
TB	GNU BLUES	B. Kasperek	94	VioletBlue
IB	GNU RAYZ	B. Kasperek	97	VioletYellow
TB	GNUS FLASH	B. Kasperek	96	Violet

## Kary Garden

TYPE	NAME	HYBRIDIZER	YR	COLOR
TB	*GRAPE CHAMPAGNE	Shepard	97	PurpleWhite
TB	HORNS & BLUES	Hedgecock	96	Blue
TB	JOY JUNCTION	Burseen	93	TanPurple
TB	LAST BLAST	Burseen	96	Purple
TB	M0940-3	M. Dunn		
TB	M1063-A	M. Dunn		Brown
TB	M2019-X	M. Dunn		
TB	M2024-D	M. Dunn		Reddish
TB	M2026-B	M. Dunn		RedBrown
TB	M2043-C	M. Dunn		Blend
TB	MISS BUTTERWORTH	Hedgecock	94	Yellow
TB	NAVY BLUES	B. Dunn	94	Blue
TB	NIGERIAN RASPBERRY	B. Kasperek	95	RaspberryPink
TB	NIGHT STALKER	Hedgecock	94	Black
TB	NORTH POLE	Hedgecock	95	Blue
TB	PASS THE SHADE	Burseen	94	GoldRed
TB	PETTICOATS & LACE	Hedgecock	95	Pink
TB	PILLOW FIGHT	Meek	95	Pink
LA	RAVING BEAUTY	M. Dunn	96	RedPurple
TB	RHONDA FLEMING	Mullin	93	WhiteViolet
TB	SAHARAN SUN	B. Kasperek	95	Yellow
TB	*SCOONCHEE	DeSantis	97	Plum
TB	TANZANIAN TANGERINE	B. Kasperek	95	Tangerine
TB	TIGER HONEY	B. Kasperek	94	Butterscotch
TB	UNICORN WONDER	Hedgecock	93	YellowWhite
TB	WAKE WATER	Burseen	96	Blue Ameona
TB	WALKARA	Ames	96	RedBlack
TB	WHITE BUFFALO	Hedgecock	96	White



**Marge Larson**  
**1045 E. Carver Road**  
**Tempe, AZ 85284**  
**602-839-2625**  
**76302.2734@compuserve.com**

This 1 acre ranchette provides a relaxing atmosphere for a more casual approach to garden enjoyment. Water conservation practices and use of perennials and self-seeding wildflowers in the garden design simplify chores without sacrificing beauty. More enjoyment for the gardener!

Marge Larson and her husband, Allan, built this home 22 years ago (note the use of embankments to increase energy efficiency). Cleveland life provided few opportunities for gardening, but Marge had opportunity to first work the land while working in the public gardens behind her middle school.

Her marriage to Allan, a Kansas-raised man who appreciates fresh grown produce, clinched Marge's commitment to gardening. She has been growing iris in the Phoenix area since 1985. Two years ago, they converted a por-

tion of their home into a bed and breakfast (two bedrooms and a sitting area) which, of course, includes one room decorated in an iris motif! In between, she taught school for 17 years and raised two sons.

This garden supports 285 iris. Guest iris are all located in the front of the house. Spurias line the drive to the west. Tall bearded is opposite by the palm trees in the triangular bed. The pretty orange and yellow flowers are African daisies which come up each year by themselves. The gardens are on drip irrigation; the rest of the property is flood irrigation.

Continue down the drive lined with blue plumbago to the rest of the gardens in back. You'll pass the Aracauna chickens (noted for their colored egg shells) and the horse stalls for Celerity (the Pinto) and Discretion (pure Arabian). Turning in toward the grounds, you'll see the iris gardens as well as the vegetables growing in abundance (hopefully) in spite of *El Nino*.

#### GARDEN VOTING NOTES

R15 Intro (yellow) \_\_\_\_\_

R15 Seedling (green) \_\_\_\_\_

Out of Region (rainbow) \_\_\_\_\_

Best Registered Spuria \_\_\_\_\_

Mystery TB \_\_\_\_\_

Mystery Spuria \_\_\_\_\_

Favorites: \_\_\_\_\_

Favorites: \_\_\_\_\_

#### Larson Garden

TYPE	NAME	HYBRIDIZER	YR	COLOR
SPU	*96001-9309	Shepard		White
SPU	*96004-9309	Shepard		
SPU	*AY 86F	Jenkins		
SPU	*BF 53D	Jenkins		
SPU	*BH 44A	Jenkins		
SPU	*CALIZONA	Jenkins	96	VioletYellow
SPU	RIVULETS OF PINK	Niswonger	96	Pink
SPU	*STELLA IRENE	Jenkins	95	Black
SPU	SULTAN'S SASH	Niswonger	90	Brown
SPU	SUNRISE IN MISSOURI	Niswonger	95	Yellow
TB	84-25-2	Hedgecock		Yellow
TB	84-25-6	Hedgecock		Yellow
TB	*84-35	DeSantis		White
TB	84-6-R	Hedgecock		Orange
TB	84-85-8	Hedgecock		White
TB	84-99-1	Hedgecock		Maroon
TB	*85-12	DeSantis		White
TB	*85-5	DeSantis		White
TB	*90-06	DeSantis		CreamGold
TB	ALPINE SONG	Hedgecock	93	White
TB	A-13-1	Hedgecock		Pink
TB	B1082-Z	M. Dunn		White
BB	BABOON BOTTOM	B. Kasperek	94	Pink
TB	BEAT THE HEAT	Burseen	96	VioletBlue
TB	BEWILDERBEAST	B. Kasperek	95	Violet
TB	BLACKFALLS	Nebeker	96	Black
TB	CHEROKEE NATION	Hedgecock	92	Red Bitone
TB	CHEYENNE SUMMER	Hedgecock	R96	YellowGold
TB	COURTNEY NICOLE	Hedgecock	96	PeachYellow
TB	ELAINEALOPE	B. Kasperek	95	Lavender
TB	FASHION PASSION	Burseen	93	Lavender
TB	GLORY BE	Hamblen/Meel	95	Tan
TB	GNU	B. Kasperek	94	Lavender
TB	GNU BLUES	B. Kasperek	94	VioletBlue
IB	GNU RAYZ	B. Kasperek	97	VioletYellow
TB	*GRAPE CHAMPAGNE	Shepard	97	PurpleWhite
TB	KOOL KNIGHT	M. Dunn	98	
TB	M0940-3	M. Dunn		
TB	M1063-A	M. Dunn		Brown
TB	M2019-X	M. Dunn		
TB	M2026-B	M. Dunn		RedBrown
TB	M2043-C	M. Dunn		Blend
TB	MISS BUTTERWORTH	Hedgecock	94	Yellow
TB	NAVY BLUES	M. Dunn	94	Blue
TB	*SCOONCHEE	DeSantis	97	Plum
TB	SWAGGER MATTER	Burseen	96	Lemon
TB	TANNER	Pinegar	96	Yellow
TB	*WHIPPERSNAPPER	DeJude/DeS	98	Lav BiColor





**Don and Bobbie Shepard**  
**3342 W. Orangewood**  
**Phoenix, AZ 85051**  
**602-841-1231**

Shepard Iris Garden is the largest commercial iris garden in Arizona. This is home to more spuria varieties than you'll be able to see anywhere else in the world. It is also home to Don and Bobbie Shepard, familiar names to iris fans. Don't forget your catalog!

Don has been hybridizing since 1980. His tall bearded iris introductions include CHRISTOWN JUBILEE, BIG DUKE, and BOLD PRINCE. He has won Best Introduced Iris in Region 15 (MAMOOJACK), runner-up for President's Cup Award at National Convention (SPLASH OF BLUE) and numerous AIS Honorable Mentions. His talents expand to Louisianas with PUMPKIN CHIFFON, a flat, star-shaped orange bloom available next year. (You already know NAVAJO ROSE and NAVAJO CORAL as Shepard Louisiana introductions.) Don now has his own minispuria, a 1998 introduction, named PEE WEE PETE, a 30" vigorous grower loaded with

flowers (a cross between Hager's MEGATREND and Jenkins' BABY CHICK). Don promises future spuria introductions with some extraordinary colors!

Over 100,000 plants comprise this living rainbow. In terms of varieties there are 1,000 tall bearded, 300 spuria (100 are re-selected seedlings), 100 Louisiana, 15 Siberians, 20 arilbreds and 3,000-4,000 seedlings.

Guest iris are behind the fence at the end of the drive to your right. Two beds include tall bearded and spurias. A few spuria guests are in the second field (planted in alphabetical order). Louisianas are to your left in the shade and along the fence on the west side of the property. The second lot has the major spuria planting, more tall bearded, and seedling rows for both.

If you receive spuria shipments, you'll be wowed by the vigorous and immediate growth. Spurias are forced to 100% dormancy before digging because they shock easily. Growth is 3 to 4 weeks ahead of spurias dug green.

No doubt, you'll notice the happy family of color coded minidachshunds. Grandma is Tina (green collar) with her daughters Gretchen (red) and Snitzel (blue). Gretchen's daughter is Dutchess (purple). Myrtle, the topiary dachshund, guards the front door.

#### **GARDEN VOTING NOTES**

R15 Intro (yellow) \_\_\_\_\_

R15 Seedling (green) \_\_\_\_\_

Out of Region (rainbow) \_\_\_\_\_

Best Registered Spuria \_\_\_\_\_

Mystery TB \_\_\_\_\_

Mystery Spuria \_\_\_\_\_

Favorites: \_\_\_\_\_

Favorites: \_\_\_\_\_

TYPE	NAME	HYBRIDIZER	YR	COLOR
SPU	*82-6C	DeSantis		RedGold
SPU	*84-40A	DeSantis		White
SPU	*84-40C	DeSantis		Lavender
SPU	*91-06	DeSantis		Purple
SPU	*J-SPU'92-1	Johnsen		White
SPU	ADRIATIC BLUE	Niswonger	97	Blue
SPU	*ARIZONIQUE	Jenkins	98	LavYellow
SPU	*CAROLE'S CHOICE	Jenkins	98	BrownYellow
SPU	*ELFIN SUNSHINE	Jenkins	98	Yellow
SPU	*LITTLE FRILLS	Jenkins	98	VioletBlue
SPU	MISSOURI CLOUDS	Niswonger	96	White
SPU	MISSOURI IRON ORE	Niswonger	97	RedBrown
SPU	MISSOURI SPRINGS	Niswonger	97	Blue
SPU	MISSOURI SUNSET	Niswonger	97	Yellow
SPU	*PEE WEE PETE	Shepard	98	Yellow
SPU	*PERKY BLUE	Jenkins	98	Blue
SPU	RIVULETS OF PINK	Niswonger	96	Pink
SPU	*SONORAN CUTIE	Wickenkamp	98	Yellow
SPU	SP 1-94	Niswonger		Pink
SPU	SP 6-93	Niswonger		Yellow
SPU	*SUN HALO	Jenkins	98	GoldBrown
SPU	SUNRISE IN MISSOURI	Niswonger	95	Yellow

TB	*83-11B	DeSantis		Burgundy
LA	*83-5A	DeSantis		Purple
TB	84-25-2	Hedgecock		Yellow
TB	*84-35	DeSantis		White
TB	84-6-R	Hedgecock		Orange
TB	84-99-1	Hedgecock		Maroon
TB	*85-12	DeSantis		White
TB	*85-3	DeSantis		White
TB	*85-5	DeSantis		White
LA	*86-08	DeSantis		BlueGrey
TB	*90-06	DeSantis		CreamGold

## Shepard Garden

TYPE	NAME	HYBRIDIZER	YR	COLOR
TB	ALPINE SONG	Hedgecock	93	White
TB	*ARIZONA REDHEAD	Shepard	98	Red
TB	*ARIZONA CITRUS	Shepard	98	Yellow
TB	AVAILABLE	M. Dunn	96	WhiteViolet
TB	A-13-1	Hedgecock		Pink
TB	B1082-Z	B. Dunn		White
BB	BABOON BOTTOM	B. Kasperek	94	Pink
TB	BEWILDERBEAST	B. Kasperek	95	Mauve
TB	BLACK FALLS	Nebeker	96	Black
TB	CHARMED	M. Dunn	94	Cream
TB	CHEROKEE NATION	Hedgecock	92	Red Bitone
TB	CHEYENNE SUMMER	Hedgecock	R96	Yellow
TB	CLOSE SHAVE	Meek	95	IvoryPink
TB	COURTNEY NICOLE	Hedgecock	96	Peach
TB	*DEVIL'S FORK	Shepard	98	Violet
TB	*DEVIL'S SPOON	Shepard	98	Burgundy
TB	DOCTOR DARK	Burseen	94	VioletBlue
TB	ELAINEALOPE	B. Kasperek	95	Lavender
TB	*ELLEN JOY	Shepard	98	White
TB	FALLEN ANGEL	Meek	95	Lavender
TB	*FRIZZLE FRACK	Shepard	98	Violet
TB	GENE MACHINE	Burseen	92	Purple
TB	GIRAFFE KNEEHIZ	B. Kasperek	96	Apricot
TB	GNU	B. Kasperek	94	Lavender
TB	GNU BLUES	B. Kasperek	94	VioletBlue
IB	GNU RAYZ	B. Kasperek	97	VioletYellow
TB	GNUS FLASH	B. Kasperek	96	Violet
TB	HIPPO'S TUTU	B. Kasperek	96	PurpleWhite
TB	HORNS & BLUES	Hedgecock	96	Blue
TB	HOTDOGS & MUSTARD	K. Kasperek	95	MustardPurple
TB	KITCHEN SINK TOO	Burseen	96	GoldGreen
TB	KOOL KNIGHT	M. Dunn	98	
TB	LYME TYME	Messick	96	Green
TB	M0940-3	M. Dunn		
TB	M1063-A	M. Dunn		Brown
TB	M2019-Y	M. Dunn		
TB	M2024-D	M. Dunn		Reddish
TB	M2026-B	M. Dunn		RedBrown
TB	M2028-A	M. Dunn		BiColor
TB	M2043-C	M. Dunn		Blend
TB	MACARENA	Messick	97	Orange
TB	MISS BUTTERWORTH	Hedgecock	94	Yellow
TB	MYSTERY STORY	Pinegar	95	Plum
TB	NAVY BLUES	B. Dunn	94	Blue

## Shepard Garden

TYPE	NAME	HYBRIDIZER	YR	COLOR
TB	NIGHT STALKER	Hedgecock	94	Black
TB	*NOREEN'S DELIGHT	Shepard	98	BlueBitone
TB	OPAL BROWN	Meek	96	Apricot
TB	PILLOW FIGHT	Meek	95	Pink
TB	SAHARAN SUN	B. Kasperek	95	YellowGold
TB	SARA'S BEAUTY	Pinegar	96	Violet
TB	*SCOONCHEE	DeSantis	97	Plum
TB	*STORMY CINDY	Shepard	98	Mauve
TB	SPICED TIGER	B. Kasperek	96	GoldMaroon
TB	STEP BEYOND	Burseen	92	Purple
TB	TIGER HONEY	B. Kasperek	94	Butterscotch
TB	WALKARA	Ames	96	RedBlack
TB	*WHIPPERSNAPPER	DelJudge/DeS:	98	Lav BiColor
TB	WHITE BUFFALO	Hedgecock	96	White
TB	ZANDRIA	Nebeker	96	PinkPurple



**Ellen Joy Smith**  
**8145 W. Coolidge**  
**Phoenix, AZ 85033**  
**602-846-4007**

You'll be transported to another space and time in this Secret Garden, overflowing with beautiful iris and spring blooms. Designed to capture the romance, delicacy and richness of a Victorian garden, the grounds of this home demonstrate how a garden can transform the visitor as well as the land.

This is home to Ellen, husband Scott, and mother Arlene. The dog, Smokey, is the goodwill ambassador. Ellen has gardened in the Phoenix area for 22 years; this has been her home for the past 13. She has loved flowers of all forms since childhood. Sorry you can't ask Grandmother Ellen Smith about her zinnias when Ellen Joy (at age 3) picked every prize-winning bloom and gave them to her as a gift!



Ellen is the gardener of the family, but she is quick to point out the helping hands that support her. You will notice special touches here and there in the garden, just like the English Tea theme to the refreshment table - all personally homemade delicacies.

Over 270 iris are cultivated. Guest iris are mostly in the front yard, although a few are also in back. Spuria guests are located along the west wall in the front for easy viewing. Tall bearded guest irises line the front porch. Around back you will see an abundance of iris interlaced with spring bedding flowers and bulbs (Phoenix style). Don't miss the handcrafted "spring" and water fountain replete with blooming Louisianas.

Nearly 85% of all watering is done via AquaPore drip irrigation systems. AquaPore is a local company that uses recycled automobile tires in its products. Ellen's garden frequently serves as a test garden for this company's products. Dave of AquaPore, introduced products to her seven years ago and Ellen truly loves the watering system.

#### GARDEN VOTING NOTES

R15 Intro (yellow) \_\_\_\_\_

R15 Seedling (green) \_\_\_\_\_

Out of Region (rainbow) \_\_\_\_\_

Best Registered Spuria \_\_\_\_\_

Mystery TB \_\_\_\_\_

Mystery Spuria \_\_\_\_\_

Favorites: \_\_\_\_\_

Favorites: \_\_\_\_\_

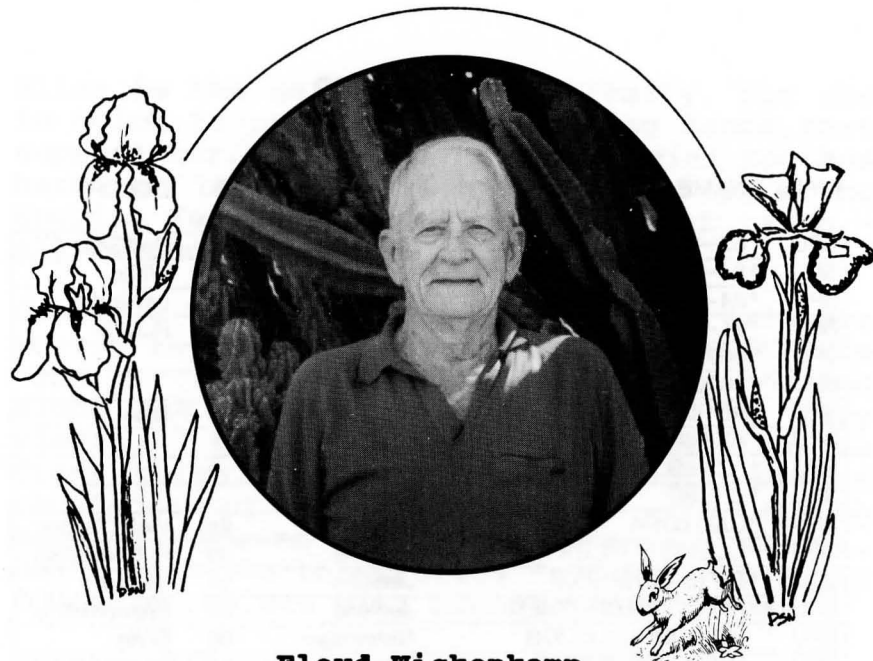
#### Smith Garden

TYPE	NAME	HYBRIDIZER	YR	COLOR
SPU	*82-6C	DeSantis		RedGold
SPU	*84-40A	DeSantis		White
SPU	*84-40C	DeSantis		Lavender
SPU	*91-06	DeSantis		Purple
SPU	*96001-9309	Shepard		
SPU	*96004-9309	Shepard		
SPU	ADRIATIC BLUE	Niswonger	96	Blue
SPU	*AY 86F	Jenkins		
SPU	*AZ 68D	Jenkins		
SPU	*BF 53D	Jenkins		
SPU	*CALIZONA	Jenkins	96	VioletYellow
SPU	*COLOR SORCERY	Jenkins	96	PurpleBrown
SPU	*ELFIN SUNSHINE	Jenkins	98	Yellow
SPU	*FALCON'S BROTHER	Jenkins	97	BrownYellow
SPU	MISSOURI CLOUDS	Niswonger	96	Shite
SPU	MISSOURI SPRING	Niswonger	94	Blue
SPU	MISSOURI SUN	Niswonger	96	Yellow
SPU	*PERKY BLUE	Jenkins	97	Blue
SPU	RIVULETS OF PINK	Niswonger	96	Pink
SPU	SP 4-93	Niswonger		Blue
SPU	SP 4-94	Niswonger		Yellow
SPU	SP 5-94	Niswonger		Violet
SPU	*STELLA IRENE	Jenkins	95	Black
SPU	SULTAN'S SASH	Niswonger	90	Brown
SPU	*SUN SPLASH	Jenkins	97	WhiteYellow
SPU	SUNRISE IN MISSOURI	Niswonger	95	Yellow

TB	84-6-R	Hedgecock		Orange
TB	ALPINE SONG	Hedgecock	93	White
TB	*ELLEN JOY	Shepard	98	White
TB	GNU AGAIN	B. Kasperek	94	VioletWhite
TB	*GRAPE CHAMPAIGN	Shepard	97	PurpleWhite
TB	M2028-A	M. Dunn		BiColor
TB	RHONDA FLEMING	Mullin	93	WhiteViolet
TB	SAHARAN SUN	B. Kasperek	95	Yellow
TB	SPICED TIGER	B. Kasperek	96	GoldMaroon
TB	TIGER HONEY	B. Kasperek	94	Butterscotch
TB	WALKARA	Ames	96	RedBlack





**Floyd Wickenkamp**  
**10521 Bellarose Drive**  
**Sun City, AZ 85351**  
**602-977-2354**

The Sonoran desert in bloom can be a beautiful, diverse showing of nature's richness in unexpected form. Certainly this is evident in this garden, where you'll remember the big cactus and all the spuria iris!

This is home to one of Sun Country's and AIS's long time members and supporters, Floyd Wickenkamp. He has generously opened his home and gardens to AIS tours in the past and does so again for us all to enjoy. If you haven't seen these grounds yet, you probably know Floyd through his beautiful spuria introductions such as SON OF SUN ('83, winner of the 1994 Eric Nies Medal), BETTY MY LOVE ('89, named for his late wife), and WYOMING COWBOYS ('94). (A little known secret is that Floyd grew iris as a youngster growing up in Wyoming, an interest shared with his mother -- they were tall bearded!)

A strong influence in spuria hybridizing, each of Floyd's introductions has won an Honorable Mention from AIS upon reaching eligibility. Four have received Awards of Merit: ORO DE SONORA ('91), KITT PEAK ('87), SONORAN CABALLERO ('89), and SONORAN SENORITA ('89). The latter has been runner-up for the Nies Award twice! He's still growing strong with over 200 clumps of iris.

Guest iris, all spurias, are distributed around the grounds: some in the back portion, some in the covered courtyard.

There are a number of the so-called classic irises scattered around the yard as well as the lovely species *I. crocea* with its long narrow falls. There is also a large clump of PREMIER, the first registered spuria dating back to 1899.

Beds are islands ringed with brick or native rock and low wire fencing to keep out rabbits in search of exquisite salads! Lots of wildlife abounds in this garden including Gamble's quail, cactus wren, and hummingbirds.

Floyd is giving away red spider lilies, *lobivia* cactus, *echinopsis* cactus, and *lobivopsis* or Diehl's Hybrid cactus. The latter is actually a cross between *lobivia* and *echinopsis*. Its blooms are 7" in diameter. The green centers shade to white and then rose; the blossom's exterior is maroon. This beautiful plant was "discovered" at Riverside Cactus Garden on old U.S. 60 where it ringed the perimeter for 100-150 feet. A prolific bloomer, it will flower about every 2 weeks from April to October. Plant it where it will get relief from strong sun (note Floyd's grow in the constant shade of trees). Eventually, you will have to stake the cactus.

Okay, for those of you awestruck by those big cactus, here are their names. *Cereus peruvianus*, *Cereus peruvianus* "monstrosa" (lumpy by comparison), *Cereus davamii*, *Cereus hildmannianus* (8" diameter white blossoms), *Cereus schottii* (totem pole cactus), and *Myrtillocactus* console ("myrtillo" meaning "blue"). The low-growing, shaded cacti with Easter-lily-like flowers are either *lobivia* or *echinopsis*. Floyd has over 25 varieties of cactus.

#### GARDEN VOTING NOTES

R15 Intro (yellow) \_\_\_\_\_

R15 Seedling (green) \_\_\_\_\_

Out of Region (rainbow) \_\_\_\_\_

Best Registered Spuria \_\_\_\_\_

Mystery TB \_\_\_\_\_

Mystery Spuria \_\_\_\_\_

Favorites: \_\_\_\_\_

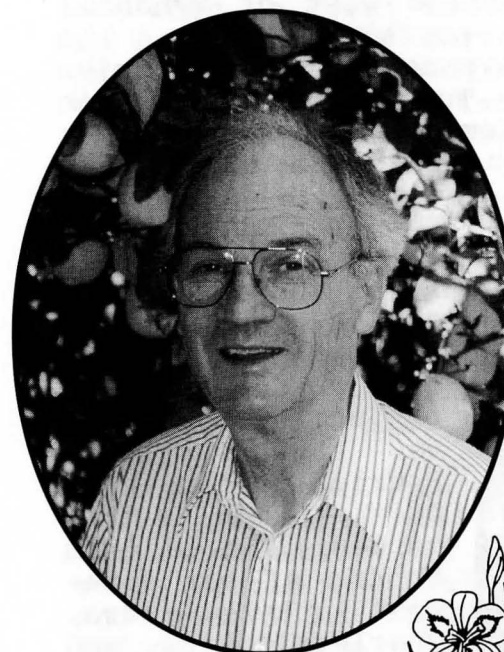
Favorites: \_\_\_\_\_

TYPE	NAME	HYBRIDIZER	YR	COLOR
SPU	*84-40A	DeSantis		White
SPU	*84-40C	DeSantis		Lavender
SPU	ADRIATIC BLUE	Niswonger	96	Blue
SPU	*FALCON'S BROTHER	Jenkins	97	BrownYellow
SPU	MISSOURI CLOUDS	Niswonger	96	White
SPU	*SONORAN CUTIE	Wickenkamp	98	Yellow
SPU	*STELLA IRENE	Jenkins	95	Black
SPU	*SUN SPLASH	Jenkins	97	WhiteYellow

#### BONUS GARDEN TOURS



We offer three additional bonus gardens for touring Sunday afternoon after the Awards Banquet. All gardens will close at 6:00 pm. Be sure to sign the Rainbows of the Desert register to qualify for special prizes! We hope you enjoy your visit with these Sun Country Iris Society gardeners.



**John Comer**  
**12215 N. 49th Ave.**  
**Glendale, AZ 85304**  
**602-978-1530**  
**jdcomer@ix.netcom.com**

Louisiana fans should make plans to visit this garden. John has a fine collection of about 35 Louisiana iris, one of which recently won Queen of Show. Citrus trees create a micro-climate more to Louisianas' liking. Bouganvillea and cape honeysuckle form the backdrop



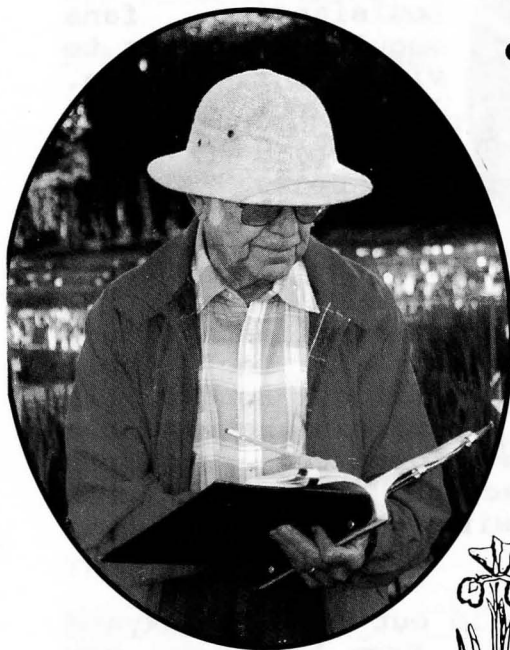
for this lovely collection. This has been home to John and his wife, Frances, for over 23 years.

The gardens are well laid out in the backyard around a covered patio. From here, one can relax and take in the surrounding beauty of seasonal iris in bloom. In addition to Louisianas, there is a bed dedicated to about 20 arilbred cultivars. The largest bed is dedicated to about 55 tall bearded iris, including some newer varieties.



A few clumps of spurias are in the outer border. Charming mini-roses line the western wall of the house and are tucked in here and there in the garden. John is experimenting this year with bed rotation, letting the soil rest and restore itself from the heavy demands of growing iris.

Major crossroads are 47th Avenue and Cactus. (47th Avenue is 2.5 miles west of Wyndham; Cactus is 1 mile north). From the intersection of 47th Avenue and Cactus, drive west to 49th Avenue. Turn north (right) on 49th Avenue. The Comer's house is on a corner, the first house on the right that faces 49th Avenue.



**Charles Jenkins, Ph.D.**  
**9426 E. Topeka Drive**  
**Scottsdale, AZ 85255**  
**602-585-6390**  
**DC47-97@juno.com**

Spuria enthusiasts must see this garden! It belongs to one of our foremost hybridizers, Charles Jenkins, and his wife of 51 years, Doris. Many of his seedlings and introductions are guests at our feature gardens this weekend. He received Best in Region 15 Introduced Iris in



1997 for MEGAGOLD, Award of Merit for COLOR FOCUS and CANDLE LACE, Honorable Mentions for CLARA ELLEN, ZULU CHIEF, and ALPHASPU to name a few.

Over 100 cultivars of spuria iris comprise this garden. Compare them to the ten spuria species iris he has growing - you'll appreciate even more the work of a hybridizer! (He is trying to build up a collection of spuria species iris.)

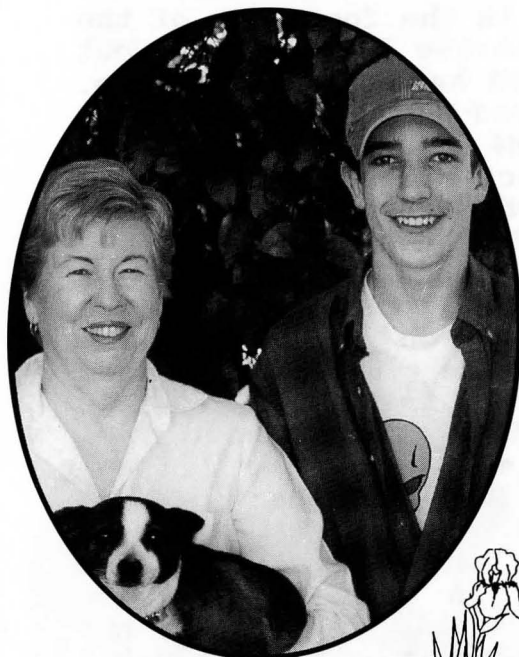
Located in Scottsdale in the foothills of the McDowell Mountains, Charles had his work cut out when he first moved here five years ago. He has literally carved this garden out of the side of a mountain! The soil was virgin desert land - the intact mineral strata could be seen as he broke ground.

He began with a prospector's pick and a sturdy wheelbarrow. The rocks adorning the garden rows were "mined" on location. (The large rock in front by the sidewalk came from the species row.) After the addition of 10 tons of top soil, a drip irrigation system, and hours of arduous soil screening (an on-going effort), his garden flourishes.

Charles' formal education is in agriculture and plant genetics. His career focused on the propagation and genetic make-up of the cereal grain triticale, a cross between wheat and rye. As hobbies, he has hybridized and/or judged dahlias, gladiolas and daffodils. He now applies his considerable scientific knowledge to the discipline of hybridizing spurias. How lucky for us!

Major crossroads are Pima (north/south street) and Frank Lloyd Wright Blvd. (Bell Road changes its name to Frank Lloyd Wright Blvd.). Pima is 13 miles east of Wyndham; Bell Road/FLW is 3 miles north. From Pima and FLW, go north on Pima Road a little over 1.5 miles (you'll cross Bell again and Princess Drive). Turn east (right) onto Downing Olson at the sign for Ironwood Village. Downing Olson curves and crosses

three dry washes. Turn left after the third bridge onto 93rd Way into the Foothills subdivision. Turn immediately right on Taro and then left onto 94th Place. The road goes uphill; at the top is Topeka. The Jenkins' home is on the north (right) side of the street.



**Carole Spiess**  
**6204 N. 15th Ave.**  
**Phoenix, AZ 85015**  
**602-242-1026**

If you want to see more of all kinds of iris, visit Carole Spiess' garden! Her cottage-style garden of iris in front mingles a good variety of 233 tall bearded, spurias, and arilbreds. She admits there are probably a few too many spurias in the rose bed, but "who can resist?" Carole



publishes the Spuria Society newsletter, in case you didn't know. Carole lives here with husband Jerry and grandson Ben Bernhagen.

This property gets flood irrigation. While ideal for trees like the citrus, eucalyptus, and the Golden Rain Tree in front (the latter should be in bloom with tiny yellow flowers), it can be devastating for iris, promoting rot. As a result, the iris gardens are birmed to keep out irrigation and to allow more controlled hand watering.

Because of their special growing requirements, especially here in the desert, her

collection of 29 Louisiana iris (interspersed with Asiatic lilies) line the house in the backyard. The covered patio delights in the relaxing sounds of a water fountain ringed with potted geraniums. The ample vegetable gardens, fruit trees and chickens lend a homestead atmosphere to these gardens even though it is located near the geographical center of Phoenix.

Major crossroads are 15th Avenue and Glendale. (15th Avenue is 1 mile east of Wyndham, Glendale is 3 miles south.) From 15th Avenue and Glendale, go south on 15th Avenue, passing the next light at Maryland. Continue 2 long blocks south to Rose Lane. The Spiess' home is on the right side of this corner opposite the golf course entrance.



## KUDOS AND SPECIAL RECOGNITIONS

Our first thanks go to our hybridizers who so generously donate irises to be guests in our gardens for your enjoyment. Our garden tours would miss that special element of delight if it weren't for these special contributors. We thank:

Hyrum Ames  
Tom Burseen  
Virginia DelJudge  
Pete DeSantis  
Bob Dunn  
Mary Dunn  
Melba Hamblen  
Jim Hedgecock  
Charles Jenkins  
Larry Johnsen  
Brad Kasperek  
Kathie Kasperek  
Duane Meek  
Virginia Messick  
Ron Mullin  
Don Nebeker  
Dave Niswonger  
Darlene Pinegar  
Richard Richards  
Don Shepard  
Floyd Wickenkamp

We receive donations for our welcome packets, door prizes and other items that lend a special touch to events such as our Trek. We wish to acknowledge the generosity of the following individuals and businesses: AquaPore, Arizona Budget Car and Truck Rental, Baker Nursery International, BankOne, Kenetico, and MetroCenter Executive Offices.



## TREK COMMITTEE

We hope you enjoy this Trek and its opportunities to learn about and enjoy iris. Such an event requires time and commitment of a number of people. We wish to recognize the special efforts of these Sun Country Iris Society members:

Chairman - Bobbie Shepard  
Assistant Chairman - Ellen Joy Smith  
Awards - Carole Spiess  
Boutique - Ellen Joy Smith  
Buses - Charles Jenkins and Larry Johnsen  
Guest Iris - Georgia Gudykunst  
Hotel/Meeting Rooms - Bobbie Shepard  
Lunch/Banquet/Garden Food - Bobbie Shepard and Betty Howard  
Publicity - Ardi Kary  
Raffle/Door Prizes - Judee Anderson  
Speakers/Judges Training - Bobbie Shepard  
Table Favors/Decorations - Ellen Joy Smith  
Treasurer/Registration - Betty Howard  
Trek Booklet - Deborah Nolan  
Welcome Packets/Name Badges - Joliene Konkol and Marge Larson

We are also indebted to the support and enthusiasm of our Sun Country Iris Society membership for rolling up their sleeves and pitching in on the variety of odds and ends that need tending.



## PHOTOGRAPH LOG SHEET AND NOTES



**AIS REGION 15**  
Herb Holk, RVP  
14115 Pear Street  
Riverside, CA 92508  
909-780-0335



Tom Abrego, President  
P. O. Box 693  
Newberg, OR 97132  
503-538-8920

## ARIZONA

Sun Country Iris Society, Phoenix; Marge Larson, 602-839-2625.

Tucson Area Iris Society, Tucson; Barbara Evans, 520-749-3088.

**CALIFORNIA**

Hi-Desert Iris & Daylily Society, Palmdale;  
Barbara Turner, 805-947-1890.

Inland Iris Society, Riverside; Carol Morgan,  
909-682-9071.

San Diego - Imperial County Iris Society, San Diego; Steve Rocha, 760-788-1423.

San Fernando Valley Iris Society, Sunlan;  
Gerald Snyder, 818-352-7018.

Southern California Iris Society, Fullerton;  
Derry Gerald, 562-420-9190.







## AWARDS AND BALLOTS

All irises blooming in our feature gardens are eligible to receive your vote. We have color coded our guest irises for your convenience. Your ballot is the last page of this booklet.

**Garden Awards.** Awards will be given for the following categories:

- \* Best In Region 15 Introduced Guest Iris (yellow ribbon). Eligible irises are asterisked in this booklet.
- \* Bernard Hamner Award: Best In Region 15 Seedling Guest Iris (green ribbon). Eligible irises are asterisked in this booklet.
- \* Clair Barr Award: Best Out of Region Introduced Guest Iris (rainbow ribbon).
- \* Walker Ferguson Spuria Award: Best Registered Spuria in Any Trek Garden.

**Favorite Irises.** This is a popularity poll (no awards given) of your ten most favorite irises as seen blooming in our feature gardens, guest or not. Results will be printed in the Region 15 Newsletter.

**Mystery Irises.** Each feature garden has two mystery irises: one is a spuria and the other is a tall bearded. They are both 1993 or later introductions. Prizes go to those who are able to correctly identify the most mystery irises!

Please give your completed ballot to your bus captain. Thank you!

## GARDEN AWARDS BALLOT



Best In Region 15 Introduced Iris (yellow ribbon)

---

Bernard Hamner Award: Best In Region 15 Seedling (green ribbon)

---

Clair Barr Award: Best Out of Region Introduced Iris (rainbow ribbon)

---

Walker Ferguson Spuria Award: Best Registered Spuria in Any Trek Garden

---

Favorites (any variety, guest or not):

- |          |           |
|----------|-----------|
| 1. _____ | 2. _____  |
| 3. _____ | 4. _____  |
| 5. _____ | 6. _____  |
| 7. _____ | 8. _____  |
| 9. _____ | 10. _____ |

OVER FOR MYSTERY IRIS!!!!!!!!!!!!

## AWARDS AND BALLOTS (continued)

I've got it! Here are the names of the  
Mystery Iris! And here is my name:

My Name: \_\_\_\_\_

Howard Garden:

1. \_\_\_\_\_ 2. \_\_\_\_\_

Kary Garden:

1. \_\_\_\_\_ 2. \_\_\_\_\_

Larson Garden:

1. \_\_\_\_\_ 2. \_\_\_\_\_

Shepard Garden:

1. \_\_\_\_\_ 2. \_\_\_\_\_

Smith Garden:

1. \_\_\_\_\_ 2. \_\_\_\_\_

Wickenkamp Garden:

1. \_\_\_\_\_ 2. \_\_\_\_\_